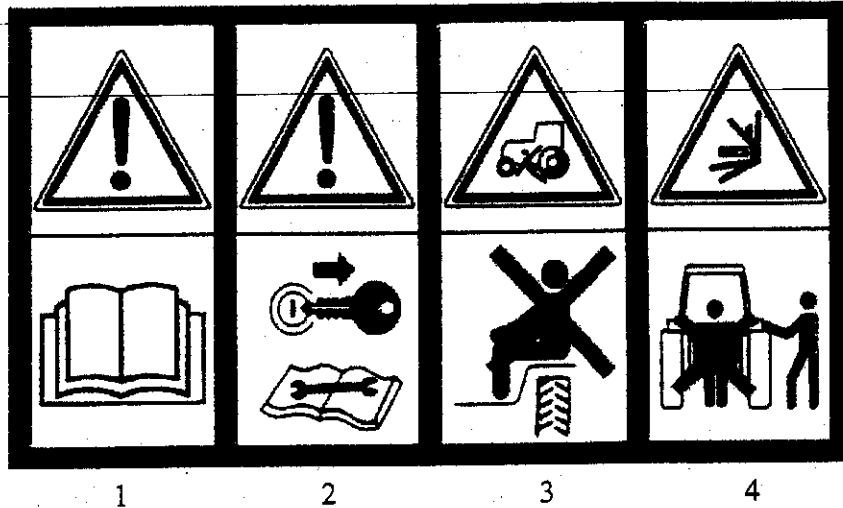


SAFETY AND WARNING DECALS



Safety decals on the implement contain important safety warning messages. To prevent injuries we invite the operator to read them carefully and keep them clear. Check that all the decals are on the machine. If not, **DO NOT USE** the machine and report to the Dealer immediately to get the decals. Decals on the machine are the following and mean:



1. Before operating the equipment, read carefully the operator's manual.



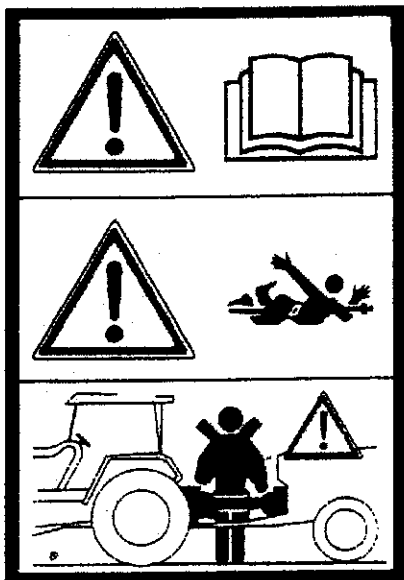
2. Before maintenance operation, disengage the tractor PTO, lower the implement, shut off the engine, remove the ignition key and read the operator's manual.



3. Do not allow riders on tractor or implement.



4. Do not stand up behind the tractor during the operations.



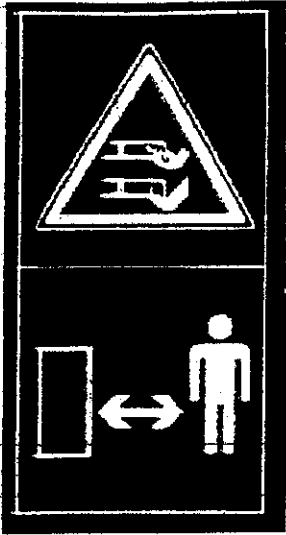
5. Before connecting PTO shaft to the tractor read operator's manual carefully.



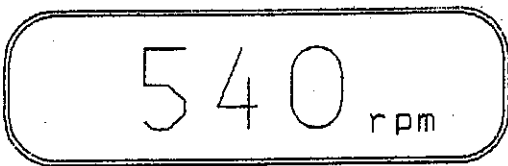
6. DANGER! Entanglement of driveline.



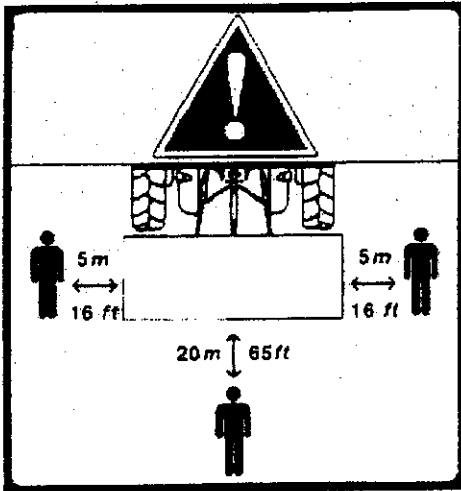
7. **KEEP AWAY** from driveline in operation: contact can cause death!



8. **Danger.** Your hands and feet can be injured by moving parts. Keep away from the implement.



9. The machine is designed for use on tractors with 540 RPM PTO only.



10. **Caution!** During working operations all bystanders must stay beyond the above shown distances from the implement.

SAFETY DECALS

IMPORTANT:

TO HELP PREVENT INJURIES, THIS MACHINE IS LABELED WITH SAFETY AND WARNING DECALS

* CHECK TO SEE THAT ALL DECALS ARE ON THE TILLER. IF NOT, DO NOT USE THE MACHINE AND REPORT THIS TO YOUR DEALER IMMEDIATELY.

DECALS ON YOUR MACHINE ARE:

! DANGER !

**ROTATING DRIVELINE CONTACT CAN CAUSE DEATH
KEEP AWAY!**

DO NOT OPERATE WITHOUT

- ALL DRIVELINE, TRACTOR AND EQUIPMENT SHIELDS IN PLACE
- DRIVELINES SECURELY ATTACHED AT BOTH ENDS
- DRIVELINE SHIELDS THAT TURN FREELY ON DRIVELINE.

! DANGER !

DO NOT RAISE MACHINE MORE THAN 10 INCHES (254 mm) OFF GROUND WHILE TRACTOR PTO IS ENGAGED OR DRIVELINE FAILURE MAY OCCUR CAUSING POSSIBLE INJURY OR DEATH TO TRACTOR OPERATOR.

! DANGER !

KEEP AWAY FROM THE INTAKE AND DISCHARGE OPENING WHILE KNIVES ARE IN MOTION.

SERIOUS INJURY OR DEATH CAN RESULT FROM THROWN OBJECTS OR BLADE CONTACT.

! WARNING !

1. KEEP ALL SHIELDS, GUARDS AND DEFLECTORS IN PLACE.
2. READ OPERATOR'S MANUAL AND FOLLOW ALL SAFETY PRECAUTION (CONTACT DEALER FOR MANUAL).
3. BEFORE SERVICING WORKING ON OR MAKING ADJUSTMENTS ON MACHINES:
DISENGAGE POWER
SHUT OFF ENGINE
MAKE SURE KNIFE ARMS HAVE STOPPED REVOLVING
4. DO NOT OPERATE MACHINE IN VICINITY OF OTHER PERSONS. NO RIDERS.
5. DO NOT OPERATE P. T. O. IN TRANSPORT POSITION
6. LOWER IMPLEMENT. STOP ENGINE AND REMOVE KEY BEFORE DISMOUNTING TRACTOR.

! DANGER !

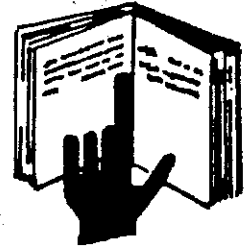
ENTANGLEMENT WITH ROTATING DRIVE PARTS CAN CAUSE INJURY OR DEATH.

KEEP ALL POWER DRIVE SYSTEM SAFETY SHIELDS IN PLACE.

OPERATE ONLY WITH 540 RPM PTO



SAFETY PRECAUTIONS



A MAJOR CONCERN IN OPERATING EQUIPMENT IS SAFETY. YOU, THE OPERATOR, CAN AVOID MANY ACCIDENTS BY OBSERVING THE FOLLOWING PRECAUTIONS. STUDY AND FOLLOW THESE PRECAUTIONS AND INSIST THAT THOSE WORKING WITH YOU FOLLOW THEM.

1. DO NOT ALLOW ANYONE TO STAND OR SIT ON THE IMPLEMENT WHILE IT IS BEING OPERATED OR TRANSPORTED.
2. DO NOT LEAVE THE TRACTOR SEAT UNTIL THE ENGINE IS SHUT OFF, BRAKES LOCKED AND THE IMPLEMENT LOWERED TO THE GROUND.
3. BEWARE OF BYSTANDERS WHILE OPERATING THIS MACHINE.
4. KEEP HANDS, FEET AND CLOTHING AWAY FROM ALL MOVING PARTS.
5. MAINTAIN ALL SHIELDS AND DEFLECTORS IN PLACE AND FUNCTIONING PROPERLY AT ALL TIMES.
6. DO NOT ALLOW CHILDREN TO PLAY WITH OR TO OPERATE THIS MACHINE.
7. ALWAYS BE SURE ANY NEW OPERATOR HAS A THOROUGH UNDERSTANDING OF THE IMPLEMENT AND THAT THEY FOLLOW THE SAFETY PRECAUTIONS.
8. KEEP ALL SAFETY DECALS CLEARLY VISIBLE. REPLACE ILLEGIBLE OR MISSING DECALS PROMPTLY.
9. KEEP YOUR MACHINE IN GOOD WORKING CONDITION. CHECK FOR LOOSE, BROKEN OR WORN PARTS BEFORE OPERATING. CONTACT YOUR DEALER OR A QUALIFIED SERVICE TECHNICIAN FOR REPAIRS.
10. AVOID HITTING OBSTRUCTIONS AND WORKING IN CONDITIONS WHICH MIGHT CREATE EXCESSIVE STRAIN ON THE IMPLEMENT OR THE TRACTOR.
11. NEVER ATTEMPT TO ADJUST OR PERFORM MAINTENANCE ON THIS MACHINE WHILE IT IS BEING OPERATED.

ATTENTION:



THIS SYMBOL MEANS YOUR SAFETY IS INVOLVED

MAIN CHECKLIST

BEFORE MOUNTING THIS MACHINE TO THE TRACTOR YOU SHOULD CHECK AND INSPECT:

1. OIL LEVEL IN THE GEARBOX. THIS CHECK IS MADE BY REMOVING THE OIL LEVEL PLUG ON THE SIDE OF THE GEARBOX. THE OIL LEVEL IS OK IF YOU CAN SEE IT AT THE SAME LEVEL WITH THE HOLE. (FIG 2.1 AREA 1)
2. OIL LEVEL IN THE CHAIN DRIVE CASE: THIS IS DONE BY REMOVING THE SIDE CHECK PLUG. THE CORRECT LEVEL IS AT THE SAME HEIGHT AS THE CHECK PLUG HOLE. (FIG 2.1 AREA 2)
3. SAFETY DECALS ARE ON THE MACHINE AND CLEARLY VISIBLE. (FIG 2.1 AREA 3)
4. FOR LOOSE BOLTS AND NUTS AND TIGHTEN IF NECESSARY. (FIG 2.1 AREA 4)
5. ALL SAFETY SHIELDS, THAT THEY ARE IN PLACE AND IN GOOD WORKING ORDER.

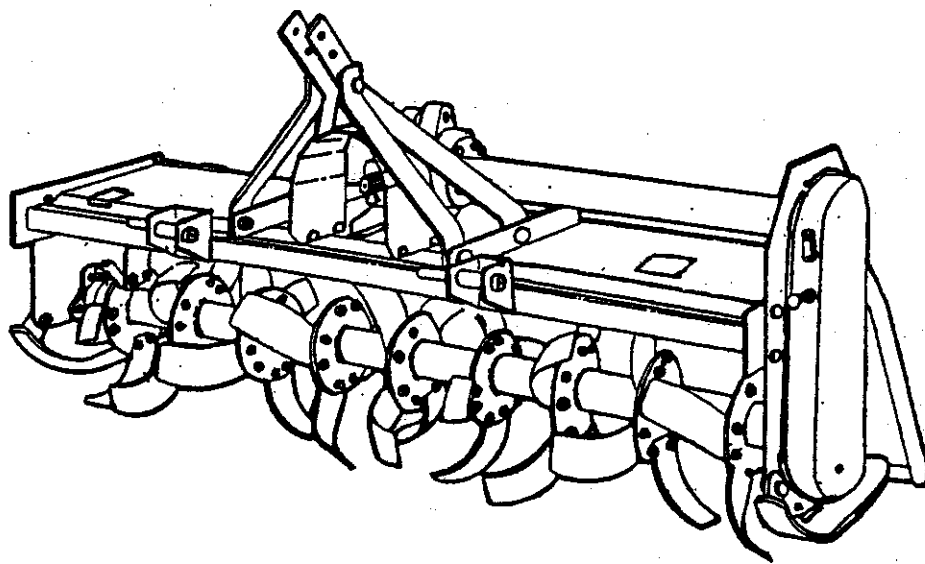


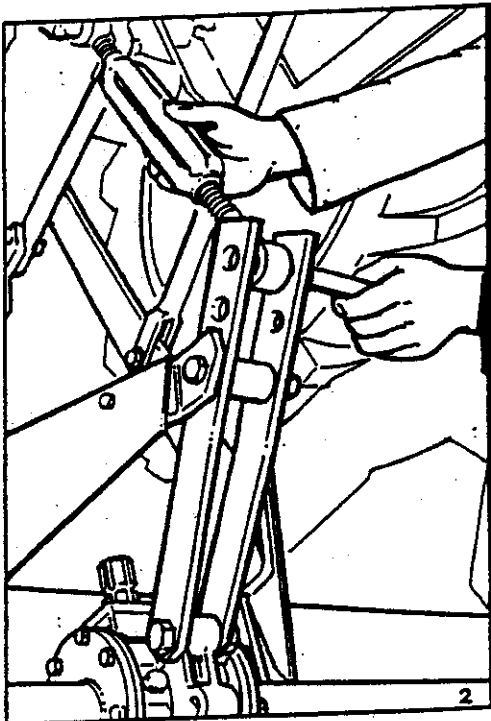
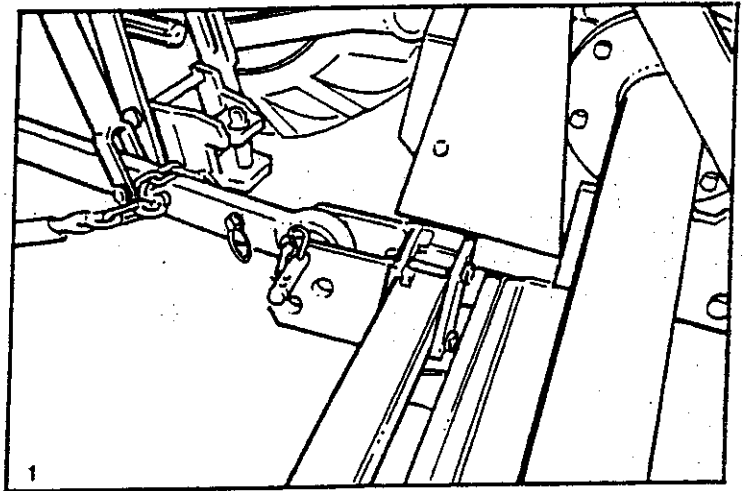
FIG 2.1

ATTACHING MACHINE TO THE TRACTOR

WARNING

MAKE SURE TRACTOR ENGINE IS OFF BEFORE MOUNTING THE MACHINE TO THE TRACTOR.

1. ATTACH THE TWO LOWER ARMS OF THE TRACTOR TO THE TWO LOWER PINS OF THE MACHINE. (FIGURE 3.1)



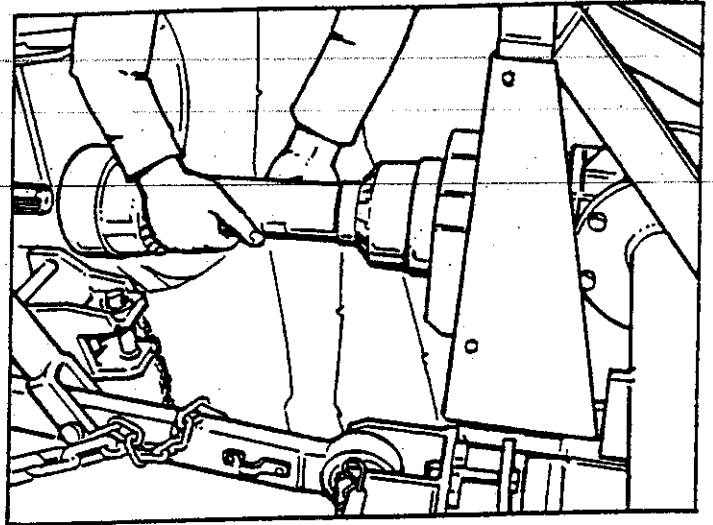
2. THEN ATTACH THE TRACTOR'S TOP LINK TO THE MACHINE'S UPPER HITCH BRACKET. (FIGURE 3.2)

ATTACHING MACHINE TO THE TRACTOR

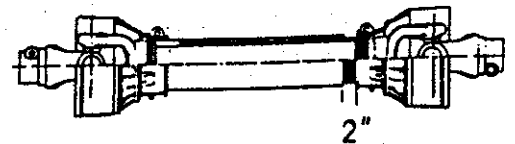
(CONTINUED)

3. CONNECT THE PTO SHAFT.

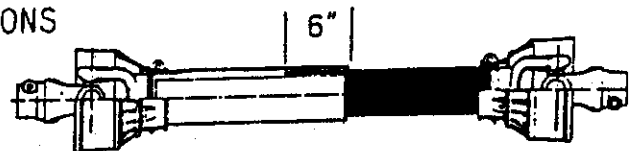
BE SURE THAT BOTH ENDS
ARE SECURELY LOCKED ON.
(FIGURE 3.3)



- WITH THE MACHINE POSITIONED SO THAT THE PTO SHAFT IS LEVEL, THE TWO PTO SECTIONS SHOULD BE EXTENDED AT LEAST 2 INCHES LONGER THAN ITS CLOSED LENGTH.



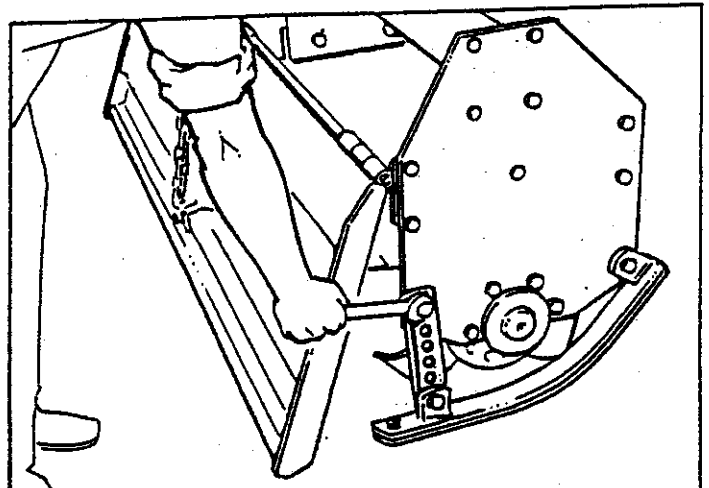
- WITH THE MACHINE POSITIONED SO THAT THE PTO IS AT IT'S LONGEST LENGTH, THE TWO SECTIONS SHOULD BE ENGAGED AT LEAST 6 INCHES.



- IF PTO SHAFT IS TOO LONG, SEE:

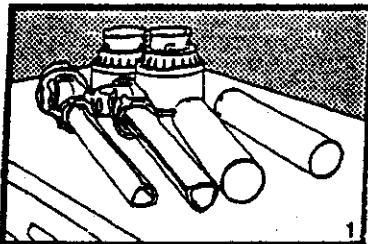
SHORTENING THE PTO SHAFT

- ## 4. SET THE WORKING DEPTH BY ADJUSTING THE SKIDS ON EACH SIDE OF THE MACHINE. (FIGURE 3.5)

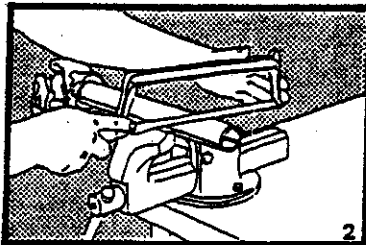


SHORTENING THE PTO SHAFT

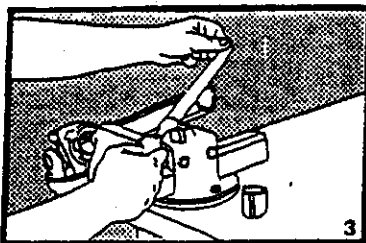
DUE TO THE DIFFERENT TYPES OF TRACTORS, THE PTO SHAFT MAY NEED TO BE SHORTENED; PLEASE FOLLOW THESE STEPS AFTER HAVING DETERMINED THE RIGHT LENGTH OF THE SHAFT.



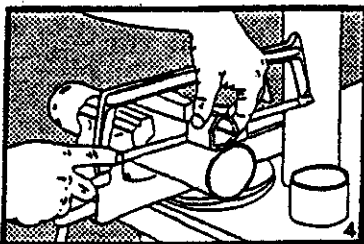
1. REMOVE THE PLASTIC PROTECTION SHIELDS



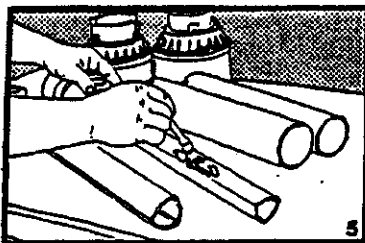
2. CUT THE EXCESS LENGTH OF BOTH PROFILE SHAFTS.



3. DEBURR AND CLEAN THE ENDS OF THE SHAFTS.



4. USE THE CUT-OFF EXCESS SHAFTING AS A GUIDE TO CUT THE PLASTIC TUBES



5. LUBRICATE THE MALE PROFILE SHAFT AND REASSEMBLE ALL PROTECTION SHEILDS.

BEGINNING WORK

- A. BE SURE THAT THE MACHINE IS LEVEL WITH THE GROUND. ADJUSTING THE TRACTOR'S TOP LINK, AND/OR LIFT ARMS MAY BE NECESSARY.
- B. CONNECT THE PTO SHAFT TO THE TRACTOR'S PTO AND THE IMPLEMENT SECURELY.
- C. RAISE THE MACHINE OFF THE GROUND ENOUGH TO MAKE TURNS WITHOUT MAKING CONTACT WITH THE GROUND.
- D. ENGAGE THE TRACTOR'S PTO DRIVE AND BEGIN DRIVING THE TRACTOR FORWARD WHILE GRADUALLY LOWERING THE MACHINE TO THE GROUND.

ATTENTION



ALWAYS RAISE MACHINE ABOVE THE GROUND BEFORE MAKING TURNS. OTHERWISE THIS COULD CAUSE DAMAGE TO YOUR MACHINE.

UNHITCHING THE MACHINE FROM THE TRACTOR

1. LOWER THE MACHINE TO THE GROUND.
2. SWITCH OFF THE TRACTOR ENGINE.
3. REMOVE THE TOP PIN, DETACH TOP LINK.
4. DETACH LOWER LINKS.
5. DISCONNECT PTO SHAFT

SUGGESTIONS ON HOW TO USE THE MACHINE PROPERLY

ATTENTION



OPERATING THIS MACHINE AT DIFFERENT PTO SPEEDS THAN INDICATED, MAY RESULT IN DAMAGES TO THE MACHINE AND/OR INJURY TO YOURSELF AND OTHERS.

- FOR A VERY FINE SEEDBED! LOWER THE REAR SHIELD COMPLETELY AND DRIVE THE TRACTOR SLOWLY WHILE TILLING. HIGHER TRACTOR SPEEDS WITH THE REAR SHIELD RAISED WILL PRODUCE MORE COARSE SOIL CONDITION.
- IN ROCKY SOIL, KEEP THE REAR SHIELD IN A RAISED POSITION.
- WORKING DEPTH IS ADJUSTED BY MOVING THE SKID SHOES UP OR DOWN

ATTENTION



IN ORDER TO PREVENT INJURIES, BE SURE THAT ALL SAFETY SHIELDS AND PROTECTIONS ARE IN PLACE AND FUNCTIONING PROPERLY BEFORE BEGINNING OPERATIONS.

MAINTENANCE

ATTENTION



NEVER PERFORM MAINTENANCE ON THIS MACHINE WHILE TRACTOR ENGINE IS SWITCHED ON.

EVERY 10 WORKING HOURS:

- CHECK FOR LOOSE TILLER BLADES AND RETIGHTEN AS NEEDED. FIG. 4.1
- CLEAN DIRT BUILD UP FROM PTO SHAFT.
- MAKE SURE PTO SHAFT AND CLUTCH PROTECTIONS ARE IN PLACE AND IN GOOD WORKING ORDER.
- GREASE ROTOR SHAFT SUPPORT, RIGHT SIDE, OPPOSITE TO THE CHAIN DRIVE. (FIGURE 4.2)
- CLEAN MACHINE BENEATH THE DECK OF EXCESSIVE DIRT BUILD UP.

EVERY 20 WORKING HOURS:

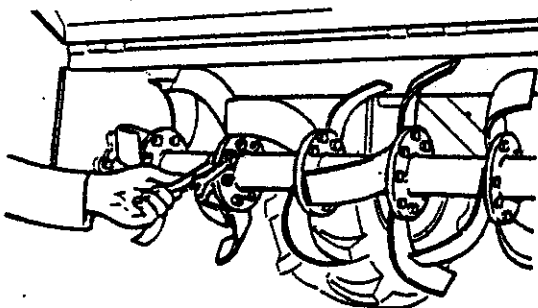
- CHECK OIL LEVEL IN GEARBOX AND CHAIN DRIVE.

EVERY 40 WORKING HOURS:

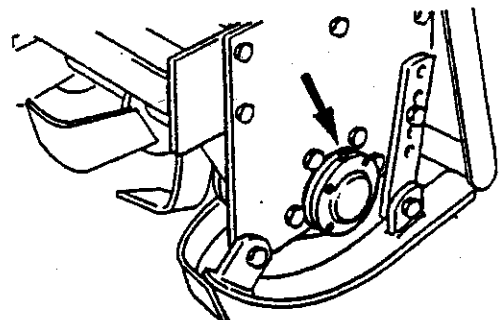
- INSPECT BLADES FOR WEAR; IF NECESSARY REPLACE WITH ORIGINAL EQUIPMENT BLADES.
- INSPECT SLIP CLUTCH FOR WEAR, IF SLIP DISKS ARE TOO WORN, CONTACT YOUR LOCAL DEALER FOR SERVICE.

EVERY 500 WORKING HOURS:

- CHANGE THE OIL IN THE GEARBOX AND CHAIN DRIVE USING SAE-90 GEAR OIL.
- INSPECT CHAIN FOR WEAR.



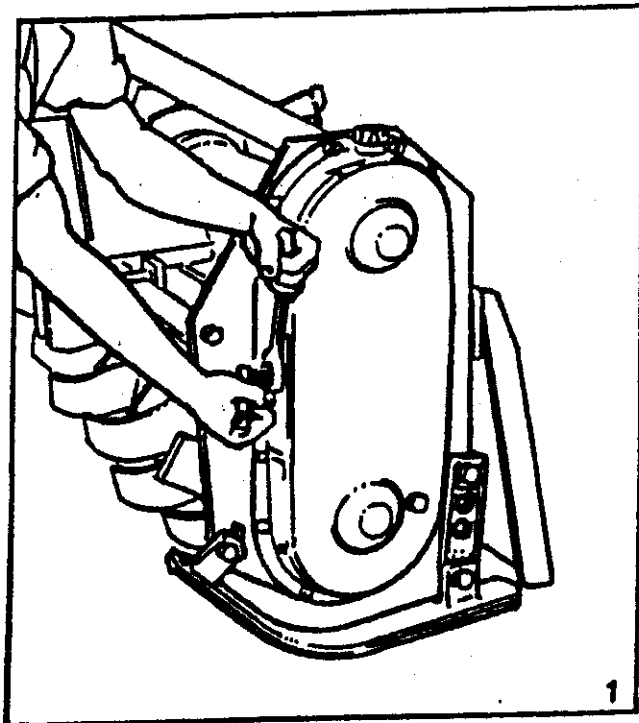
Ref. 1

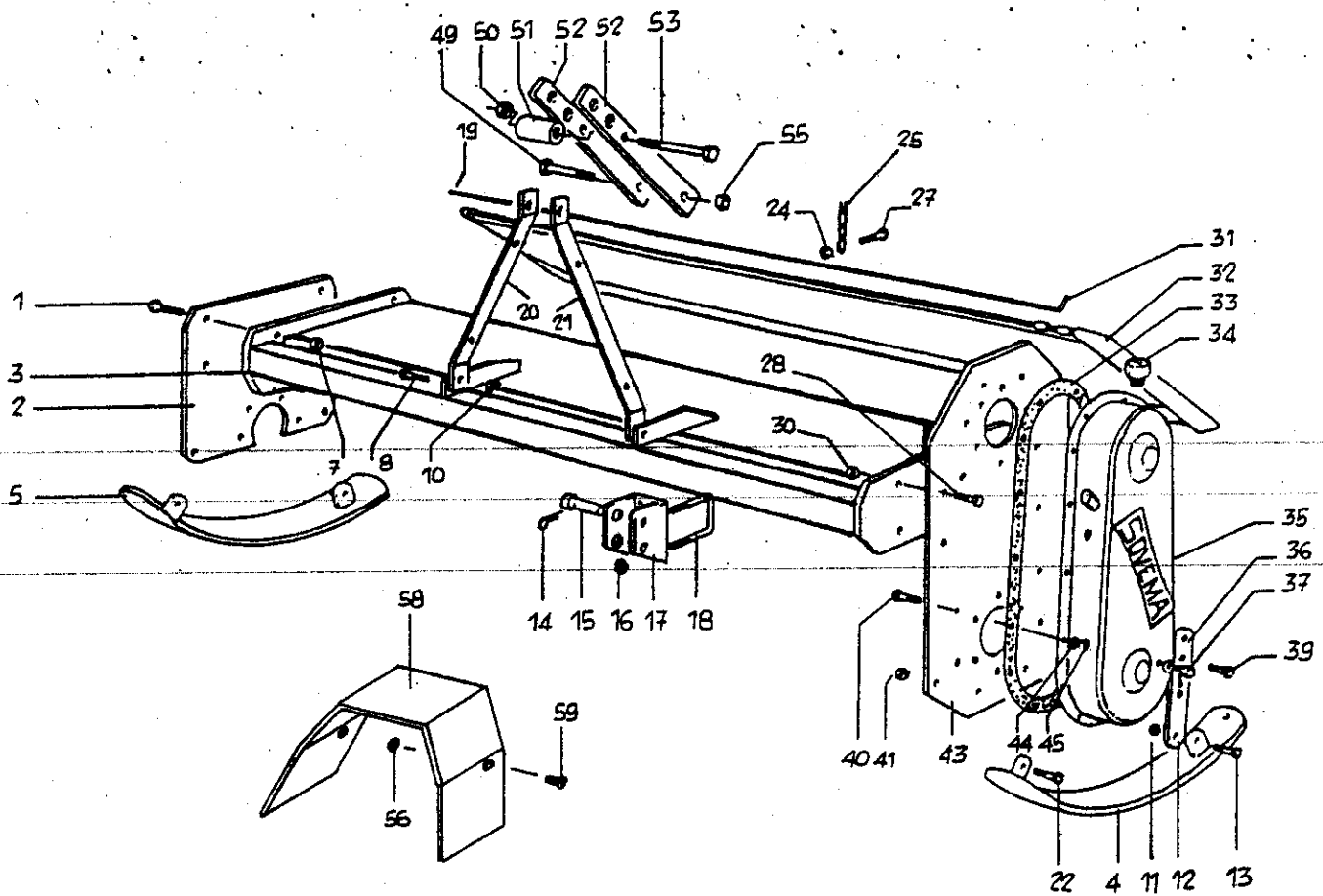


Ref. 2

CHAIN ADJUSTMENT

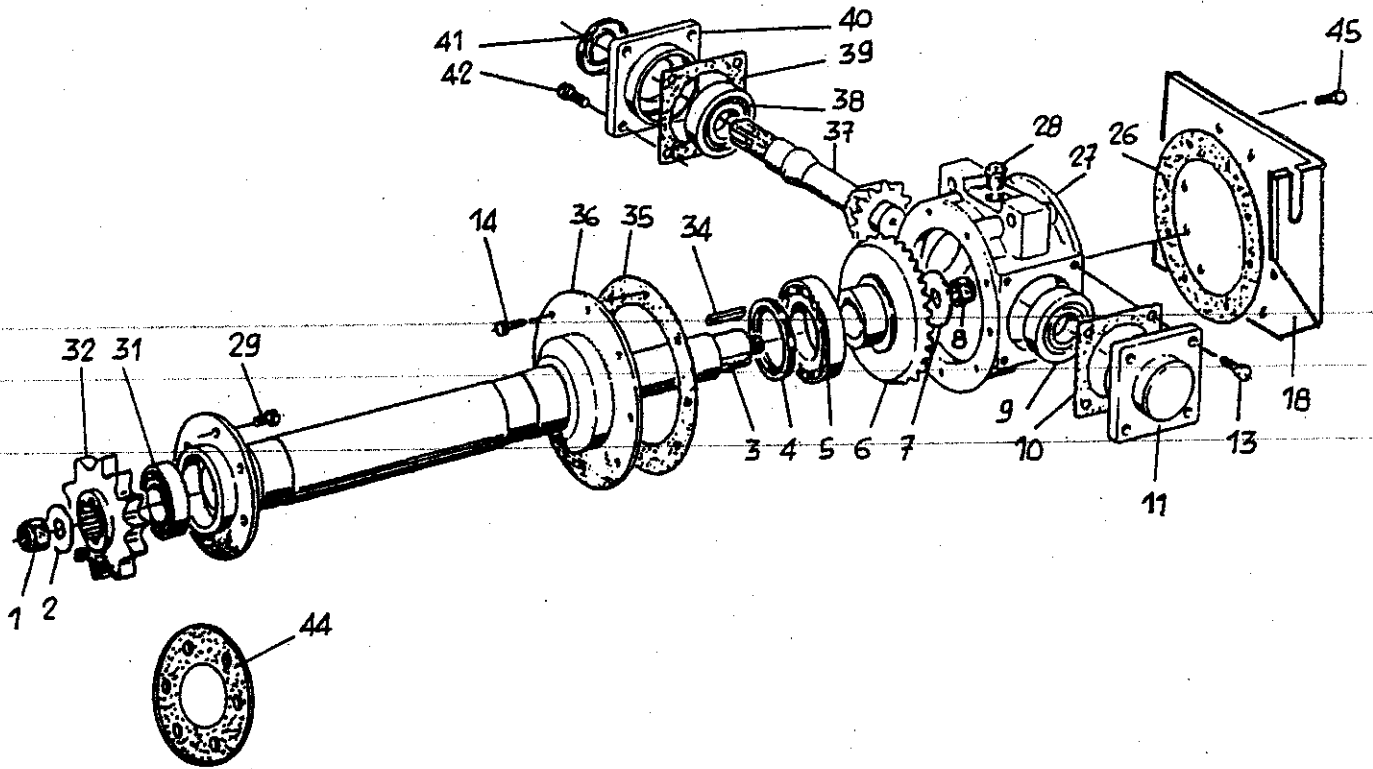
- YOUR NEW MACHINE WAS SHIPPED FROM THE FACTORY WITH THE CORRECT CHAIN TENSION PRE-SET.
- AFTER THE FIRST 10 HOURS OF USE, CHECK AND ADJUST THE CHAIN TENSION.
- THEN AFTER 50 HOURS OF USE RE-ADJUST THE CHAIN TENSION.
- TO MAKE THIS ADJUSTMENT, TIGHTEN THE BOLT OF THE CHAIN STRETCHER UNTIL YOU FEEL A SLIGHT RESISTANCE, THE CHAIN IS THEN SUFFICIENTLY TIGHT. (FIGURE 5.1)
- CAUTION: TOO MUCH TENTION CAN CAUSE DAMAGE TO THE CHAIN COVER.





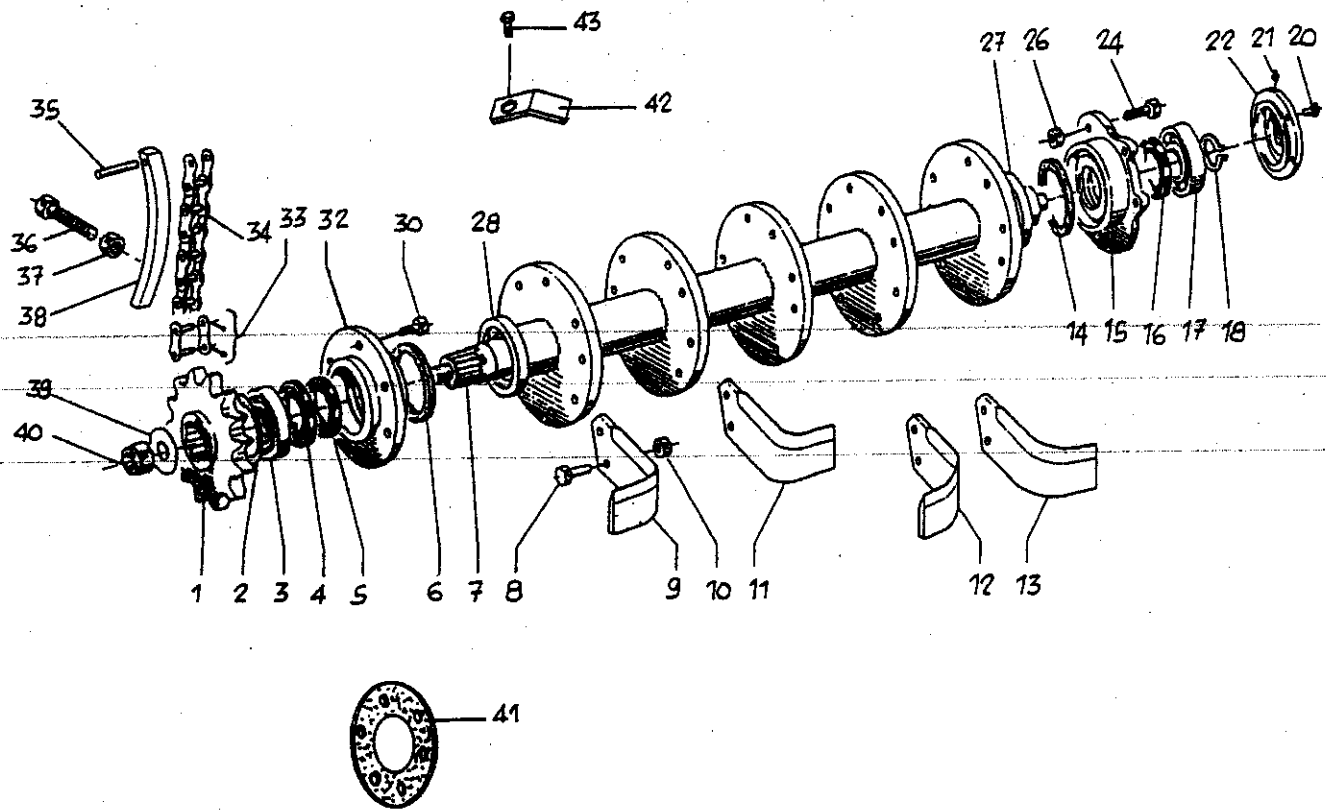
LMCP 48 AND LMCP 60 DECK

REF.	PART.#	Q.TY	DESCRIPTION	REF.	PART.#	Q.TY	DESCRIPTION
1	LMC102019	5	BOLT	30	LMC103050	5	NUT
2	LMC142049	1	END PLATE, R.H.	31	LMC114025	1	HINGE PIN, P48
3	LMC142105	1	FRAME/ DECK P48	31	LMC114031	1	HINGE PIN, P60
3	LMC142108	1	FRAME/ DECK P60	32	LMC114003	1	REAR GATE/ SHIELD 48
4	LMC115009	1	SKID/ SHOE, L.H.	32	LMC114029	1	REAR GATE/ SHIELD 60
5	LMC115010	1	SKID/ SHOE, R.H.	33	LMC139034	1	GASKET
7	LMC103050	5	NUT	34	LMC102049	1	OIL CAP
8	LMC102027	2	BOLT	35	LMC113002	1	CHAIN CASE
10	LMC103005	2	NUT	36	LMC104009	1	WASHER
11	LMC103005	6	NUT	37	LMC102009	1	BOLT
12	LMC115011	2	SKID ADJ. BRKT.	39	LMC102030	1	BOLT
13	LMC102027	2	BOLT	40	LMC102007	12	BOLT
14	LMC108006	2	SPRING CLIP	41	LMC103005	6	NUT
15	LMC116044	2	LOW. HITCH PIN	43	LMC142004	1	END PLATE, L.H.
16	LMC103035	4	NUT	44	LMC104002	12	WASHER
17	LMC116043	2	LOW. HITCH BRKT.	45	LMC103001	12	NUT
18	LMC116030	2	U-BOLT	49	LMC102041	1	BOLT
19	LMC108001	1	SPRING CLIP	50	LMC103005	1	NUT
20	LMC116045	1	UP. HITCH SUPPORT	51	LMC116026	1	SPACER
21	LMC116045	1	UP. HITCH SUPPORT	52	LMC116054	2	UP. HITCH BRACKET
22	LMC102026	3	BOLT	53	LMC102032	1	BOLT
24	LMC103050	1	NUT	55	LMC103008	1	NUT
25	LMC114016	1	ADJ. CHAIN	56	LMC103002	2	NUT
27	LMC102217	1	BOLT	58	LMC120022	1	GUARD/ SHIELD
				58	LMC102011	2	BOLT



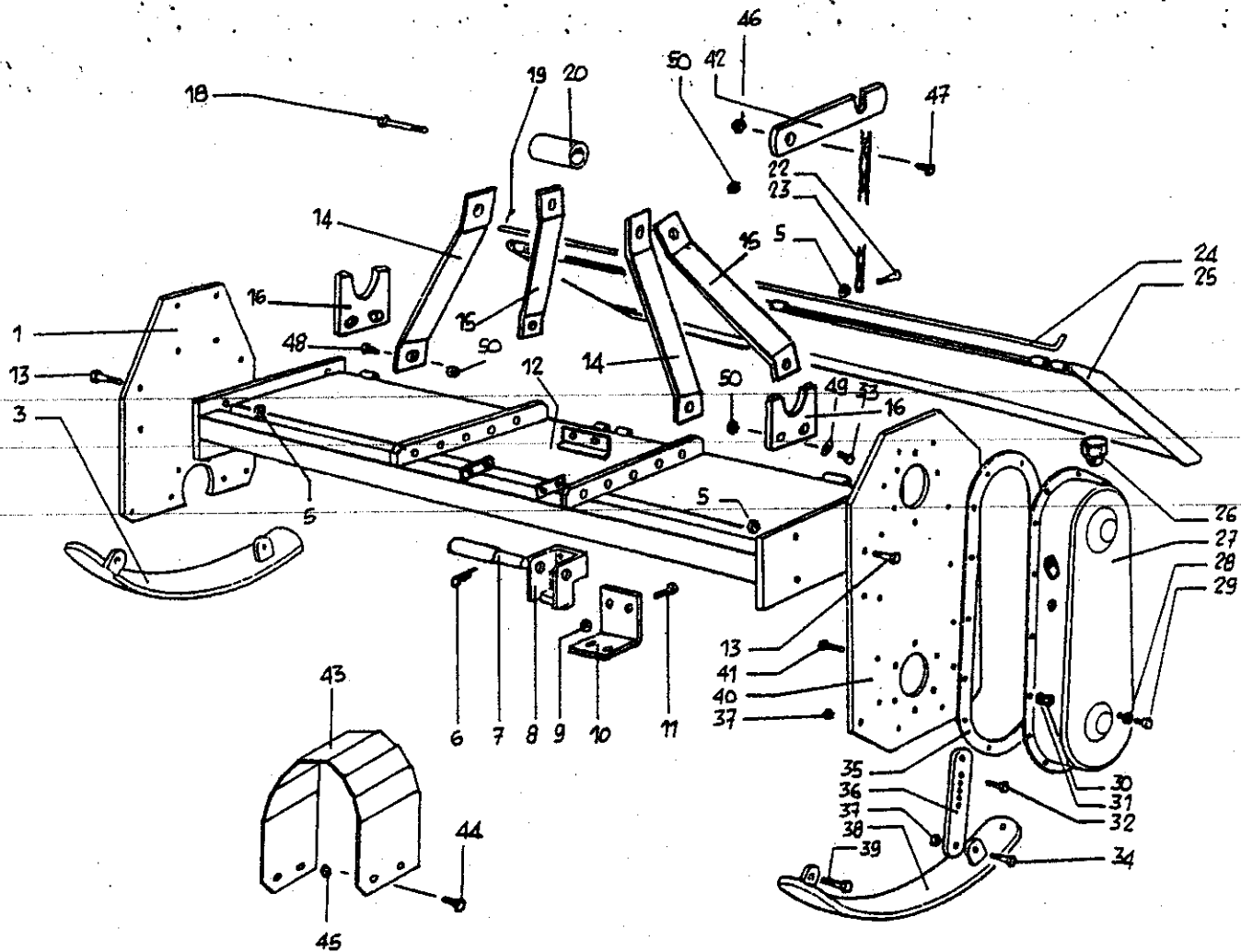
LMCP 48 AND LMCP 60 GEAR BOX

REF.	PART.#	Q.TY	DESCRIPTION	REF.	PART.#	Q.TY	DESCRIPTION
1	LMC103030	1	LOCK NUT	28	LMC102050	1	PLUG
2	LMC104013	1	WASHER	29	LMC102019	6	BOLT
3	LMC118046	1	EXT. SHAFT P48	31	LMC100016	1	BEARING
3	LMC118047	1	EXT. SHAFT P60	32	LMC112058	1	CHAIN SPROCKET
4	LMC101005	1	OIL SEAL	34	LMC105001	2	KEY PIN
5	LMC100010	1	BEARING	35	LMC139002	1	GASKET
6	LMC125005	1	CROWN GEAR	36	LMC119035	1	HSG. EXT. TUBE P48
7	LMC104012	1	WASHER	36	LMC119036	1	HSG. EXT. TUBE P60
8	LMC103014	1	LOCK NUT	37	LMC125004	1	PINION SHAFT
9	LMC100025	1	BEARING	38	LMC100020	1	BEARING
10	LMC139001	1	GASKET	39	LMC139001	1	GASKET
11	LMC125003	1	COVER/ PLATE	40	LMC125002	1	G-BOX COVER (FRONT)
13	LMC102018	4	BOLT	41	LMC101006	1	OIL SEAL
14	LMC102012	8	BOLT	42	LMC102018	4	BOLT
18	LMC124006	1	G-BOX SUPPORT PLATE	44	LMC139004	1	GASKET
26	LMC139002	1	GASKET	45	LMC102011	8	BOLT
27	LMC125001	1	G-BOX HOUSING				



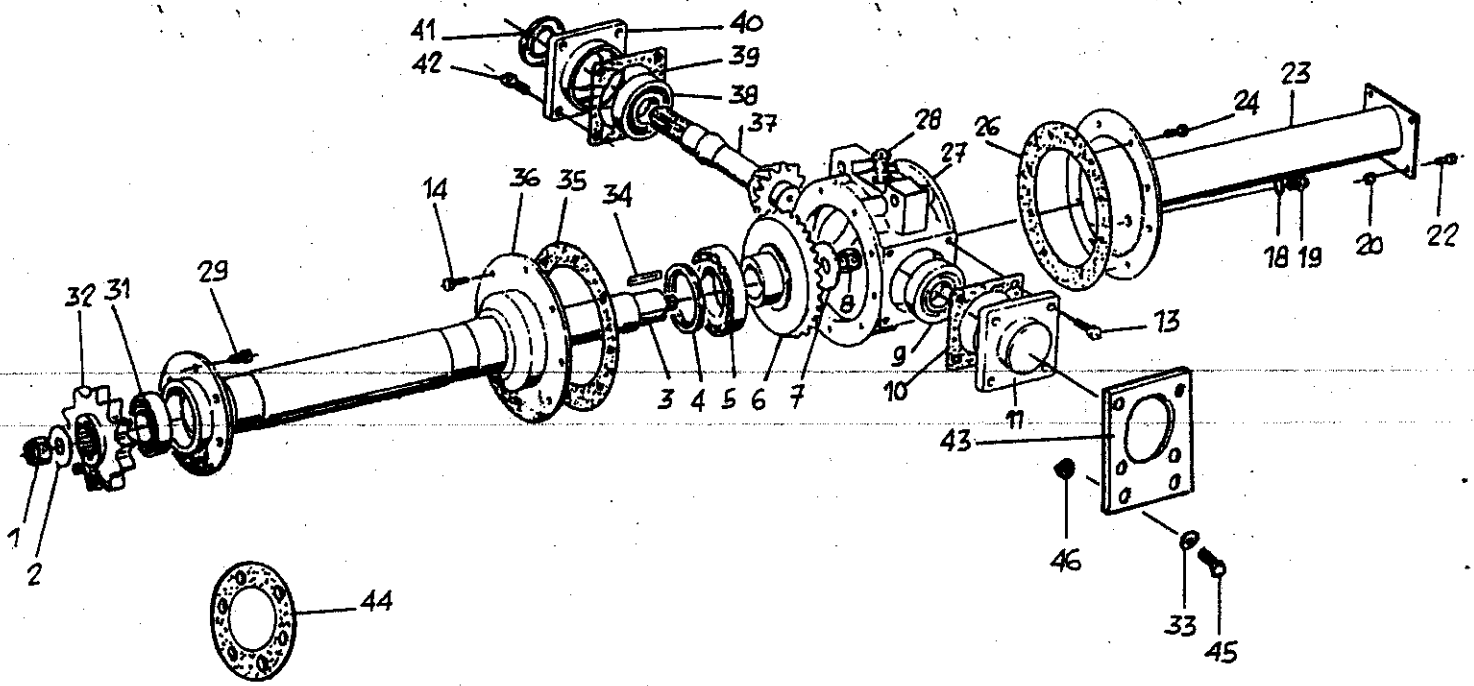
LMCP 48 AND LMCP 60 ROTOR

REF.	PART.#	Q.TY	DESCRIPTION	REF.	PART.#	Q.TY	DESCRIPTION
1	LMC112059	1	CHAIN SPROCKET	21	LMC105007	1	GREASE NIPPLE
2	LMC106005	1	RETAINER CIRCLIP	22	LMC110023	1	CAP
3	LMC100009	1	BEARING	24	LMC102020	4	BOLT
4	LMC101001	1	OIL SEAL	26	LMC103050	10	NUT
5	LMC101001	1	OIL SEAL	27	LMC110019	1	METAL RING
6	LMC107022	1	FELT RING	28	LMC110019	1	METAL RING
7	LMC110115	1	ROTOR SHAFT P48	30	LMC102020	6	BOLT
7	LMC110118	1	ROTOR SHAFT P60	32	LMC110015	1	ROTOR SUPPORT , L.H.
8	LMC102044	--	TINE BOLT	33	LMC112034	1	JOINT CHAIN
9	LMC111020	--	(OPTION) L-TINES , L.H.	34	LMC112033	1	ROLLER CHAIN
10	LMC103028	--	NUT	35	LMC113014	1	PIN
11	LMC111019	--	(OPTION) L-TINES , R.H.	36	LMC102084	1	BOLT
12	LMC111014	--	C-TINE , LH (STAND)	37	LMC103036	1	NUT
13	LMC111013	--	C-TINE , RH (STAND)	38	LMC113022	1	CHAIN TENSIONER
14	LMC107022	1	FELT RING	39	LMC104013	1	WASHER
15	LMC110013	1	ROTOR SUPPORT, R.H.	40	LMC103030	1	LOCK NUT
16	LMC101001	1	OIL SEAL	41	LMC139004	1	GASKET
17	LMC100016	1	BEARING	42	LMC110043	2	SCRAPER
18	LMC106003	1	RETAINER CIRCLIP	43	LMC102190	2	BOLT
20	LMC102203	4	BOLT				



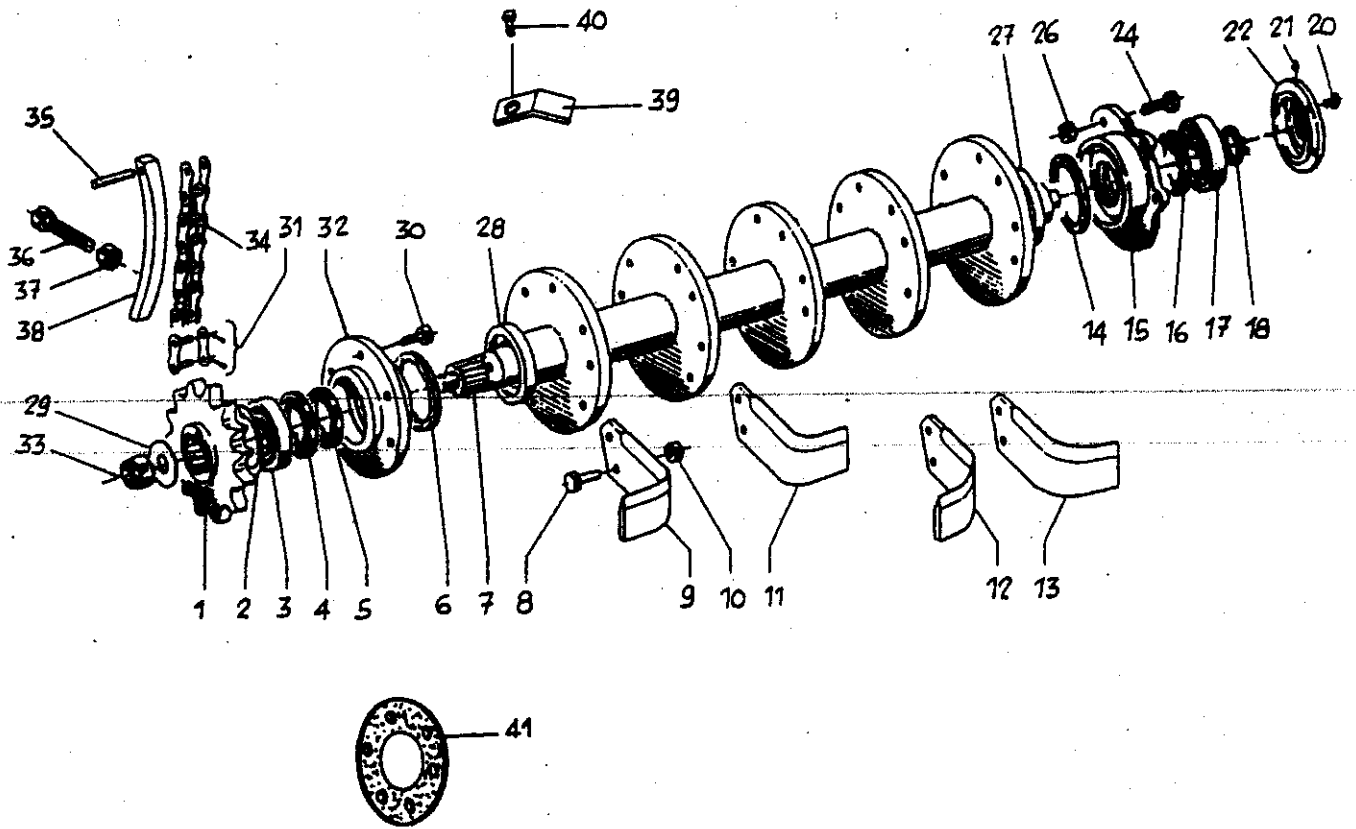
LMCP 72 DECK

REF.	PART.#	Q.TY	DESCRIPTION	REF.	PART.#	Q.TY	DESCRIPTION
1	LMC142059	1	END PLATE, R.H.	28	LMC104009	1	WASHER
3	LMC115010	1	SKID/ SHOE, R.H.	29	LMC102009	1	BOLT
5	LMC103050	11	NUT	30	LMC103001	12	NUT
6	LMC108006	2	SPRING CLIP	31	LMC104002	12	WASHER
7	LMC116033	2	LOW. HITCH PIN	32	LMC102030	1	BOLT
8	LMC116084	2	LOW. HITCH BRKT.	33	LMC102029	2	BOLT
9	LMC103050	8	NUT	34	LMC102027	2	BOLT
10	LMC116085	2	CLAMP	35	LMC139034	1	GASKET
11	LMC102052	8	BOLT	36	LMC115011	2	SKID ADJ. BRKT.
12	LMC142058	1	MAIN FRAME / DECK, P72	37	LMC103005	6	NUT
13	LMC102019	10	BOLT	38	LMC115009	1	SKID/ SHOE, L.H.
14	LMC116031	2	VP. HITCH SUPPORTS	39	LMC102026	3	BOLT
15	LMC116053	2	VP. HITCH BRACKETS	40	LMC142060	1	END PLATE, L.H.
16	LMC116022	2	EXT. TUBE SUPPORTS	41	LMC102007	12	BOLT
18	LMC102032	1	BOLT	42	LMC142110	1	GATE CHAIN BRKT.
19	LMC108001	1	COTTER PIN	43	LMC120039	1	GUARD
20	LMC116026	1	SPACER/ BUSHING	44	LMC102190	4	BOLT
22	LMC102217	1	BOLT	45	LMC103002	4	NUT
23	LMC114016	1	GATE CHAIN	46	LMC103005	1	NUT
24	LMC114021	1	GATE HINGE PIN	47	LMC102031	1	BOLT
25	LMC114010	1	REAR GATE/ SHIELD	48	LMC102027	4	BOLT
				49	LMC104001	4	WASHER



LMCP 72 GEAR BOX

REF.	PART.#	Q.TY	DESCRIPTION	REF.	PART.#	Q.TY	DESCRIPTION
1	LMC103030	1	LOCK NUT	27	LMC125001	1	G-BOX HOUSING
2	LMC104013	1	WASHER	28	LMC102050	1	PLUG
3	LMC118049	1	EXT. SHAFT P72	29	LMC102019	6	BOLT
4	LMC101005	1	OIL SEAL	31	LMC100016	1	BEARING
5	LMC100010	1	BEARING	32	LMC112053	1	CHAIN SPROCKET
6	LMC125005	1	CROWN GEAR	33	LMC104010	2	WASHER
7	LMC104012	1	WASHER	34	LMC105001	2	KEY PIN
8	LMC103014	1	LOCK NUT	35	LMC139002	1	GASKET
9	LMC100025	1	BEARING	36	LMC119038	1	HSG. EXT. TUBE P72
10	LMC139001	1	GASKET	37	LMC125004	1	PINION SHAFT
11	LMC125003	1	COVER/ PLATE	38	LMC100020	1	BEARING
13	LMC102018	4	BOLT	39	LMC139001	1	GASKET
14	LMC102011	8	BOLT	40	LMC125002	1	G-BOX COVER (FRONT)
18	LMC104009	1	WASHER	41	LMC101006	1	OIL SEAL
19	LMC102009	1	BOLT	42	LMC102018	4	BOLT
20	LMC103002	4	NUT	43	LMC116090	1	SUPPORT
22	LMC102011	4	BOLT	44	LMC139004	1	GASKET
23	LMC123049	1	EXT. TUBE P72	45	LMC102019	2	BOLT
24	LMC102012	8	BOLT	46	LMC103050	2	NUT
26	LMC139002	1	GASKET				



LMCP 72 ROTOR

REF.	PART.#	Q.TY	DESCRIPTION	REF.	PART.#	Q.TY	DESCRIPTION
1	LMC112054	1	CHAIN SPROCKET	21	LMC105007	1	GREASE NIPPLE
2	LMC106005	1	RETAINER CIRCLIP	22	LMC110023	1	CAP
3	LMC100009	1	BEARING	24	LMC102020	4	BOLT
4	LMC101001	1	OIL SEAL	26	LMC103050	10	NUT
5	LMC101001	1	OIL SEAL	27	LMC110019	1	METAL RING
6	LMC107022	1	FELT RING	28	LMC110019	1	METAL RING
7	LMC110119	1	ROTOR SHAFT P72	29	LMC104013	1	WASHER
8	LMC102044	--	TINE BOLT	30	LMC102020	6	BOLT
9	LMC111007	--	(OPTION) L-TINES , L.H.	31	LMC112023	1	JOINT CHAIN
10	LMC103028	--	NUT	32	LMC110015	1	ROTOR SUPPORT, L.H.
11	LMC111008	--	(OPTION) L-TINES , R.H.	33	LMC103030	1	LOCK NUT
12	LMC111001	--	C-TINE , LH (STAND)	34	LMC112055	1	ROLLER CHAIN
13	LMC111002	--	C-TINE , RH (STAND)	35	LMC113014	1	PIN
14	LMC107022	1	FELT RING	36	LMC102084	1	BOLT
15	LMC110013	1	ROTOR SUPPORT, R.H.	37	LMC103036	1	NUT
16	LMC101001	1	OIL SEAL	38	LMC113007	1	CHAIN TENSIONER
17	LMC100016	1	BEARING	39	LMC110043	2	SCRAPER
18	LMC106003	1	RETAINER CIRCLIP	40	LMC102190	2	BOLT
20	LMC102203	4	BOLT	41	LMC139004	1	GASKET